

Softshell Chair

vitra.

Ronan & Erwan Bouroullec, 2008



Four-legged base



Four-star base



Five-star base



Softshell Side Chair

The seat construction of the Softshell Chair ensures a level of comfort that is first revealed upon use: vertical ribs concealed in the back shell adapt to the user, providing freedom of movement as well as superb comfort, even for prolonged periods of sitting. The smooth contours and appealingly soft upholstery over the entire surface give the Softshell Chair its calm, cosy and inviting character.

Four-legged base

- **Backrest and seat:** flexible upper backrest shell. Seat and backrest shell in fibreglass-reinforced polyamide. Seat and backrest upholstery made of recyclable polyurethane foam ‚V-Foam‘. Armrests are integrated in the seat shell. Version in Laser fabric and in leather with two seams along the sides of the backrest.
- **Four-legged base:** polyamide in basic dark with glides.

Five-star base

- **Backrest and seat:** flexible upper backrest shell. Seat and backrest shell in fibreglass-reinforced polyamide. Seat and backrest upholstery made of recyclable polyurethane foam ‚V-Foam‘. Armrests are integrated in the seat shell. With two seams along the sides of the backrest.
- **Five-star base:** powder-coated (basic dark) or polished aluminium.

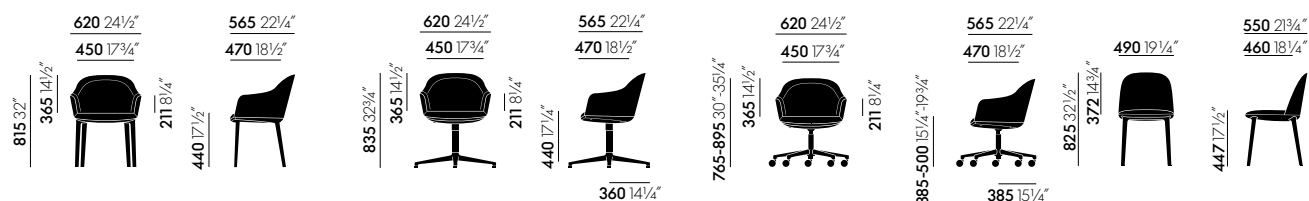
Four-star base

- **Backrest and seat:** flexible upper backrest shell. Seat and backrest shell in fibreglass-reinforced polyamide. Seat and backrest upholstery made of recyclable polyurethane foam ‚V-Foam‘. Armrests are integrated in the seat shell. With two seams along the sides of the backrest.
- **Four-star base:** aluminium powder-coated in basic dark or with polished finish (swivel function with comfortable seat depth suspension).

Softshell Side Chair

- **Backrest and seat:** seat and backrest shell in fibreglass-reinforced polyamide, flexible upper backrest shell. Seat and backrest upholstery made of recyclable polyurethane foam ‚V-Foam‘.
- **Four-legged base:** polyamide in basic dark with glides.

DIMENSIONS (in accordance with EN 1335-1:2000)

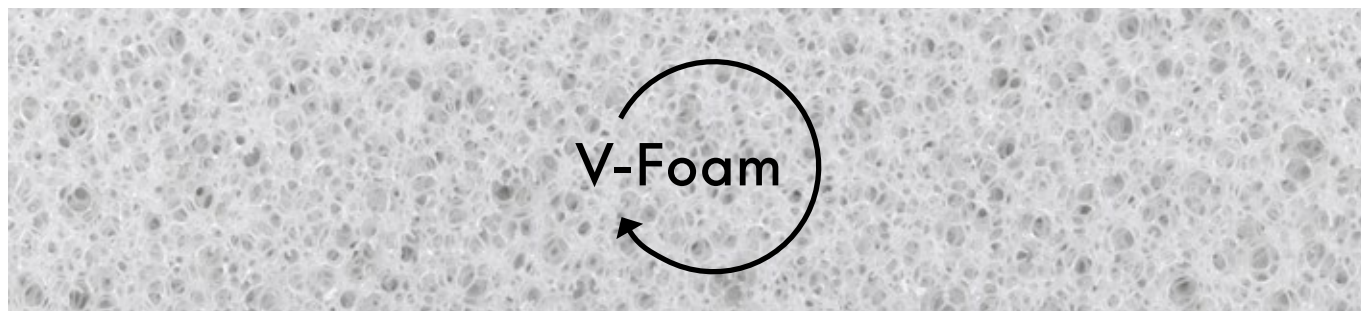


Four-legged base

Four-star base

Five-star base

Softshell Side Chair



Developed jointly by Vitra and BASF, V-Foam is the world's first economically recyclable polyurethane foam.

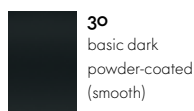
Standard polyurethane foam (PU foam) is derived from fossil fuels and utilised extensively worldwide. Its recycling process is very energy-intensive and uneconomical.

V-Foam, on the other hand, can be melted, reprocessed and returned to the material cycle in its entirety for use in new products. Vitra will gradually incorporate V-Foam for all its upholstered furniture containing moulded foam from 2025.

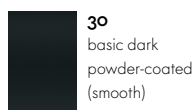
COLOURS AND MATERIALS



Four legged base



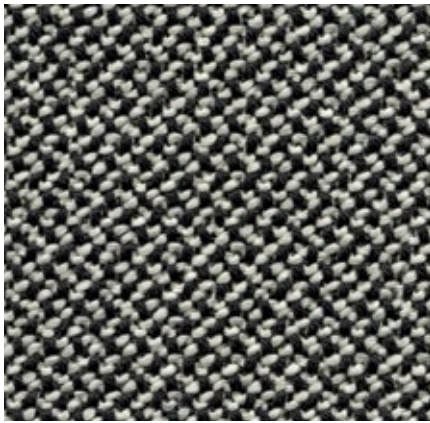
Four-star base



Five-star base

Credo Heavy use, F120

vitra.



Credo is a durable woollen fabric made of premium worsted yarn with a pleasant feel. The two- and three-tone colours give this fabric a characteristic structure and vibrant appearance. Credo allows for an effective exchange of heat to ensure comfortable thermal conditions for the sitter. The fabric can also be used in office environments.

Credo is available in 22 colours.

Material	5% polyamide, 95% new wool
Weight	640 g/m ² (18.9 oz/y ²)
Width	145 cm +/- 2 cm (57")
Abrasion resistance	100,000 Martindale
Fastness to light	Type 6
Pilling	Grade 4-5
Fastness to rubbing	Grade 4-5 dry and wet



Dumet Medium use, F80



Dumet is a cotton blend in a plain weave with a lively appearance. The natural mixed tones create an elegant look with an Italian flair. Dumet is soft and cool to the touch.

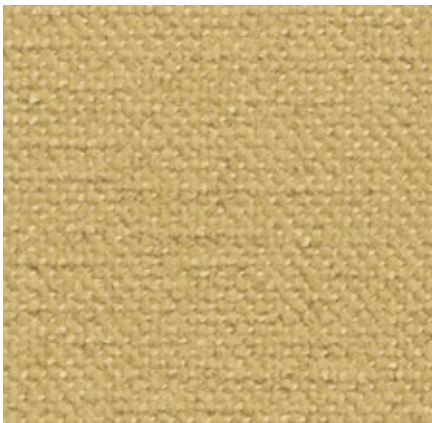
Dumet is available in 20 colours.

Material	9% polyamide, 8% linen, 22% wool, 46% cotton, 15% rayon
Weight	485 g/m ² (14.3 oz/y ²)
Width	147 cm +/- 2 cm (58")
Abrasion resistance	40,000 Martindale
Fastness to light	Type 5
Pilling	Grade 3-4
Fastness to rubbing	Grade 3-4 dry and wet



Hola Medium use, F40

vitra.



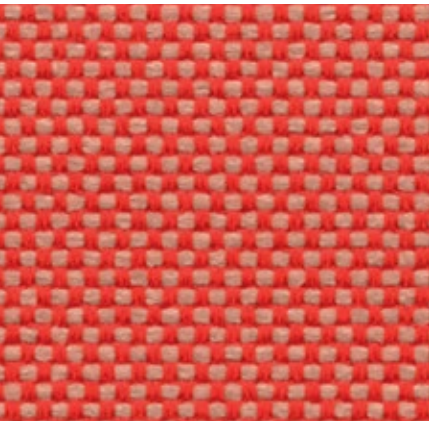
Hola is a textile made from 100% recycled polyester. Its finely textured threads are woven into a soft comfortable fabric with an understated expression and almost cotton-like feel. It is simultaneously also resilient enough to be used in semi-public spaces such as hotel lobbies. Hola is Oekotex-certified and manufactured using a dyeing process with a closed water cycle.

Hola is available in 11 colours.

Material	100% recycled polyester
Weight	470 g/m ² (13.9 oz/y ²)
Width	142 cm +/- 2 cm (56")
Abrasion resistance	60,000 Martindale
Fastness to light	Type 5
Pilling	Grade 4-5
Fastness to rubbing	Grade 4-5 dry and wet



Laser RE Heavy use, F40



The environmentally friendly fabric Laser RE is made from recycled polyester. It has a distinctive woven appearance, which is particularly accentuated by contrasting duotones in a varied palette of 25 colours. Practical and easy to care for, as well as durable and highly abrasion-resistant, Laser RE is also well suited for office environments.

Laser RE is available in 25 colours.

Material	100% recycled polyester
Weight	520 g/m ² (15.3 oz/y ²)
Width	144 cm +/- 2 cm (57")
Abrasion resistance	100,000 Martindale
Fastness to light	Type 6
Pilling	Grade 4-5
Fastness to rubbing	Grade 4-5 dry and wet

60 cream	63 warm grey/ cream	68 lemon/mustard	74 nude/light red	64 warm grey/moor brown	19 blue/moor brown
61 nude/cream	65 ice blue/cream	69 grass green/ cream	75 light red	72 emerald/ma- lachite	20 ice blue/moor brown
66 papyrus/cream	13 stone grey	70 emerald/cream	76 red/light red	56 teal blue	03 dark carbon
62 cream/mustard	67 reed green/ mustard	71 mint/malachite	73 dark red/black	77 teal blue/black	57 dark blue
04 black					

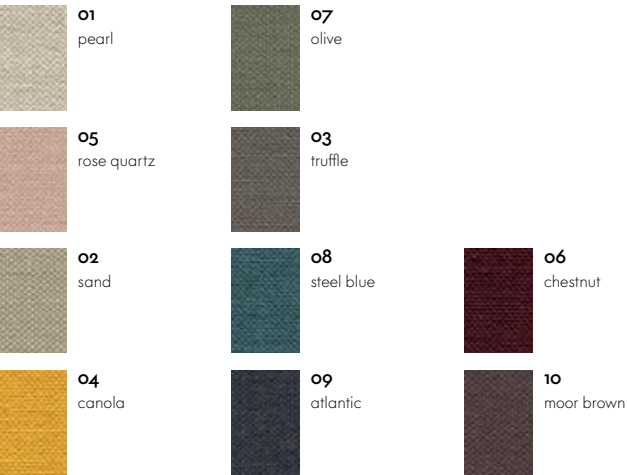
Linho Residential use, F8o



The high-quality linen fabric Linho is manufactured in Belgium, from the plant to the finished textile. It has the slightly irregular appearance that is typical of linen yarn. The fabric is cool and dry to the touch, with natural earthy tones that exhibit a Mediterranean flair. Due to its high percentage of linen, Linho tends to form elegant creases, lending a natural look to soft upholstered furniture.

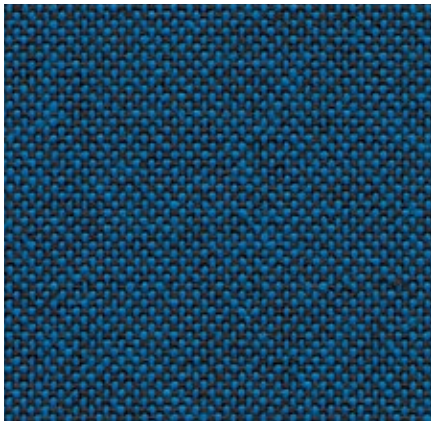
Linho is available in 10 colours.

Material	9% polyamide, 91% linen
Weight	450 g/m ² (13.3 oz/y ²)
Width	137 cm +/- 2 cm (54")
Abrasion resistance	18,000 Martindale
Fastness to light	Type 5
Pilling	Grade 3-4
Fastness to rubbing	Grade 3 dry and wet



Plano Heavy use, F30

vitra.



Plano is a robust plain weave with a flat, even texture. The wide palette of duotones with new, delicate washed-out shades includes many relatively neutral hues, a good number of which are coordinated with the Hopsak colour range. Thanks to its durability and longevity, Plano is also an ideal choice for office furnishings.

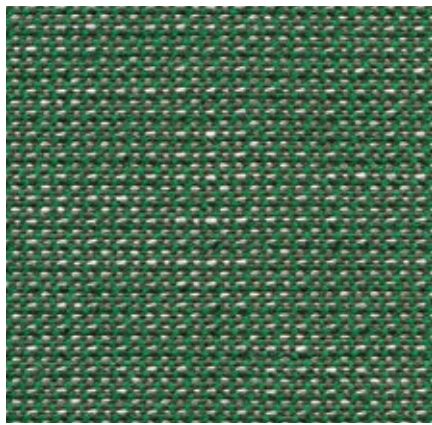
Plano is available in 39 colours.

Material	100% polyester
Weight	265 g/m ² (7.8 oz/y ²)
Width	142 cm +/- 2 cm (56")
Abrasion resistance	80,000 Martindale
Fastness to light	Type 6
Pilling	Grade 4-5
Fastness to rubbing	Grade 4-5 dry and wet

 05 cream white/ sierra grey	 34 grass green/ forest	 40 coconut/forest	 81 blue/coconut	 19 sierra grey	 73 nero/coconut
 18 light grey/sierra grey	 61 classic green/ cognac	 52 mint/forest	 13 nero/ice blue	 74 sierra grey/nero	 66 nero
 39 yellow/pastel green	 41 classic green/ forest	 43 petrol/nero	 86 dark blue/brown	 69 dark grey	 54 brown
 68 avocado	 17 forest/sierra grey	 12 light grey/ice blue	 87 nero/cream white	 62 dark grey/nero	 75 marron/nero
 11 marron/cognac	 72 poppy red	 84 poppy red/ champagne			
 67 cognac	 07 orange	 15 pink/sierra grey	 99 cognac/parch- ment		
 98 dark red/nero	 96 red/cognac	 16 dark red/ice blue	 20 tobacco/cream white		
 97 red/coconut	 63 red/poppy red	 80 coffee	 03 parchment/ cream white		

Reed Medium use, F100

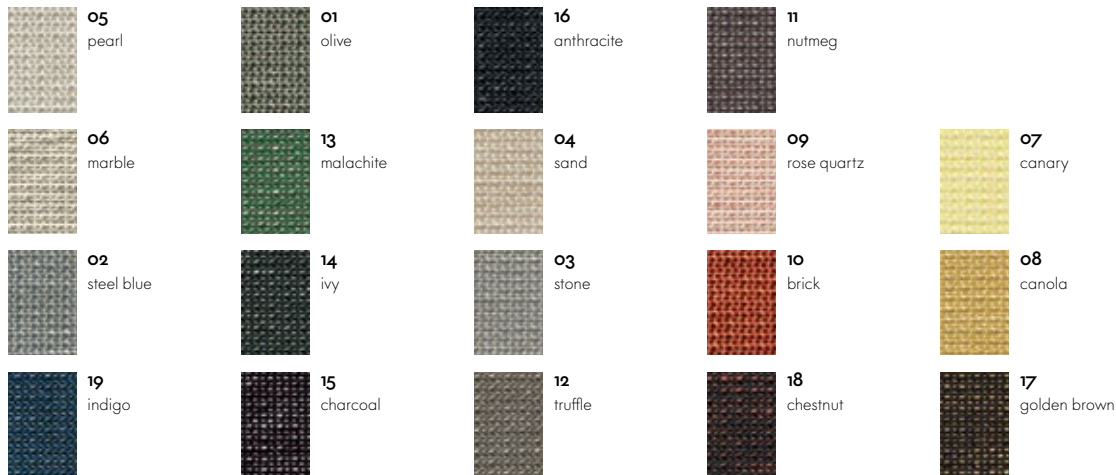
vitra.



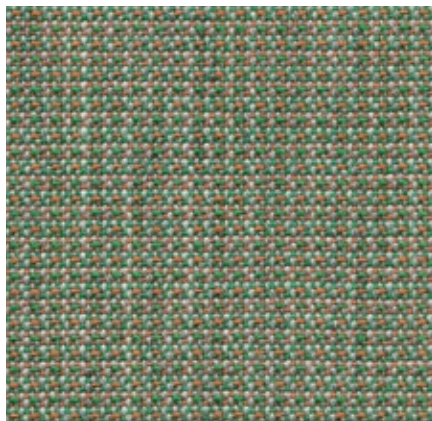
The elegant finely patterned fabric Reed is a blend of linen, wool and cotton. The structure of the fabric designed by Hella Jongerius has a hand-made look, its irregular lively linen yarn lending the fabric a natural expression. Reed is cool and soft to the touch and can be perfectly combined with other fabrics and materials.

Reed is available in 19 colours.

Material	7% polyamide, 25% new wool, 20% linen, 48% cotton
Weight	400 g/m ² (11.8 oz/y ²)
Width	142 cm +/- 2 cm (56")
Abrasion resistance	50,000 Martindale
Fastness to light	Type 5
Pilling	Grade 3-4
Fastness to rubbing	Grade 3-4 dry and wet



Tress Heavy use, F80



Tress is a flat woven fabric with a lively appearance that derives from the contrast between its even structure and the natural melange of colours. The combination of yarns with varied hues creates a harmonious and yet vibrant look. Thanks to its high wool content, Tress is a durable, easy-care material with a home-like aesthetic.

Tress is available in 22 colours.

Material	8% polyamide, 73% new wool, 19% polyester
Weight	310 g/m ² (9.1 oz/y ²)
Width	142 cm +/- 2 cm (56")
Abrasion resistance	40,000 Martindale
Fastness to light	Type 6
Pilling	Grade 4-5
Fastness to rubbing	Grade 4-5 dry and wet



Twill Heavy use, F6o

vitra.



The high percentage of natural fibres gives Twill very pleasant tactile qualities and an inviting appearance. Extremely durable with excellent abrasion resistance, it combines the qualities typically found in home furnishings with the demanding requirements of the project sector.

Twill is available in 18 colours.

Material	30% polyamide, 70% new wool
Weight	325 g/m ² (9.6 oz/y ²)
Width	155 cm +/- 2 cm (61")
Abrasion resistance	100,000 Martindale
Fastness to light	Type 6
Pilling	Grade 4-5
Fastness to rubbing	Grade 4-5 dry and wet



Volo Heavy use, F6o



Volo is a finely structured wool blend with a refined weave that gives it an elegant appearance. This expressive textile shows strong solid colours to full advantage while simultaneously offering pleasant tactile qualities. With its soft look and appealing texture, Volo is a perfect fit for home interiors, but it is also well suited for use in the contract sector.

Volo is available in 17 colours.

Material	15% polyamide, 85% new wool
Weight	435 g/m ² (12.8 oz/y ²)
Width	145 cm +/- 3 cm (57")
Abrasion resistance	100,000 Martindale
Fastness to light	Type 6
Pilling	Grade 4-5
Fastness to rubbing	Grade 4-5 dry and wet



Leather Heavy use, L20

vitra.



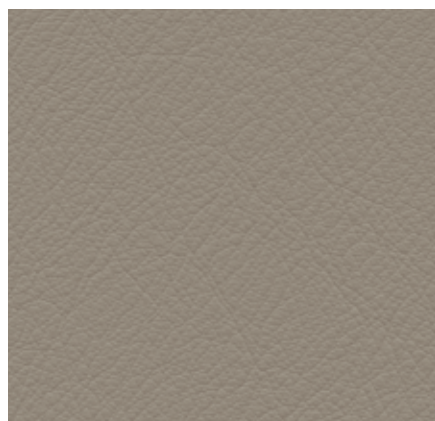
The standard grade leather used by Vitra is a robust cowhide leather, dyed-through, pigmented and embossed with an even grain pattern. Since it is hard-wearing and easy to maintain, it can also be used in office environments.

Leather is available in 16 colours.

Material	Robust cowhide with a distinctive, even grain
Fastness to light	Type 6
Thickness	1,1–1,3 mm
Fastness to rubbing	Grade 4 dry and wet



Leather Premium F Medium use, L50



Leather Premium F is a relatively smooth cowhide leather with a flat grain and fine top sheen. It is dyed-through, lightly pigmented and processed with a tanning agent extracted from olive tree leaves (a waste product of the olive harvest).

Leather Premium F is available in 22 colours.

Material	Semi-aniline nappa leather with a very soft and supple feel, vegetable tanned
Fastness to light	Type 5
Thickness	1,1–1,3 mm
Fastness to rubbing	Grade 4 dry and wet

