

Unix Chair

Antonio Citterio, 2010

vitra.

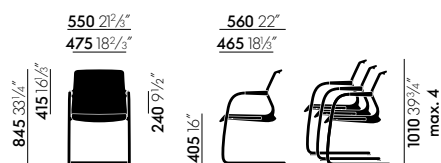


The Unix Chair is the ultimate all-rounder for office environments. It can be used behind a desk as a task chair or in front of it as a visitor chair. Unix is available in different versions that are ideal for conferences and meetings. And it is suited for touchdown workstations as well as waiting areas. The chair's structural design and the innovative padded mesh cover ensure a high level of comfort. Thanks to a wide range of colour options, it works equally well in sleek, functional office settings and in more expressive and personal work environments.

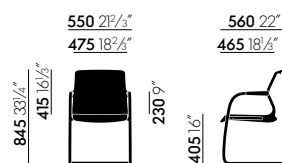
Materials

- **Seat frame and armrest sleeves:** mono-chrome polypropylene in basic dark or soft grey.
- **Seat upholstery:** made of recyclable polyurethane foam „V-Foam“.
- **Seat and back cover:** Plano fabric or one of the 3D spacer fabrics Diamond Mesh (mesh look) or Silk Mesh (solid look). For Silk Mesh in the colour soft grey, the reverse side is in soft grey. For Silk Mesh in the colours nero and asphalt, the reverse side is in nero. For Silk Mesh in the colours olive green, smoke blue and dim grey, the reverse side matches the frame colour (soft grey or nero).
- **Cantilever base:** chrome-plated tubular steel on glides. Non-stacking and stacking versions (max. 4 chairs).
- **Four-legged base:** polished, die-cast aluminium equipped with glides or castors (Ø 60 mm).
- **Four-star base:** polished die-cast aluminium on glides. Swivel mechanism with vertical spring suspension for added comfort.
- **Five-star base:** polished die-cast aluminium with double castors (Ø 60 mm). Swivel mechanism, height adjustable.

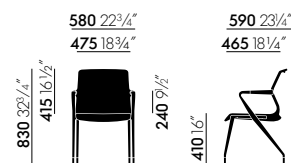
DIMENSIONS (in accordance with EN 1335-1:2000)



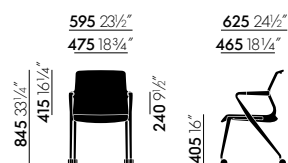
Unix Chair, Cantilever tubular steel base, stacking



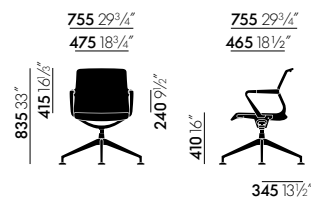
Unix Chair, Cantilever tubular steel base



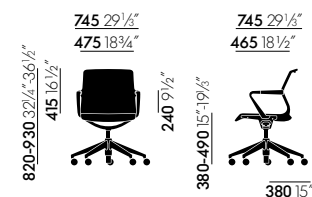
Unix Chair, Four-legged base



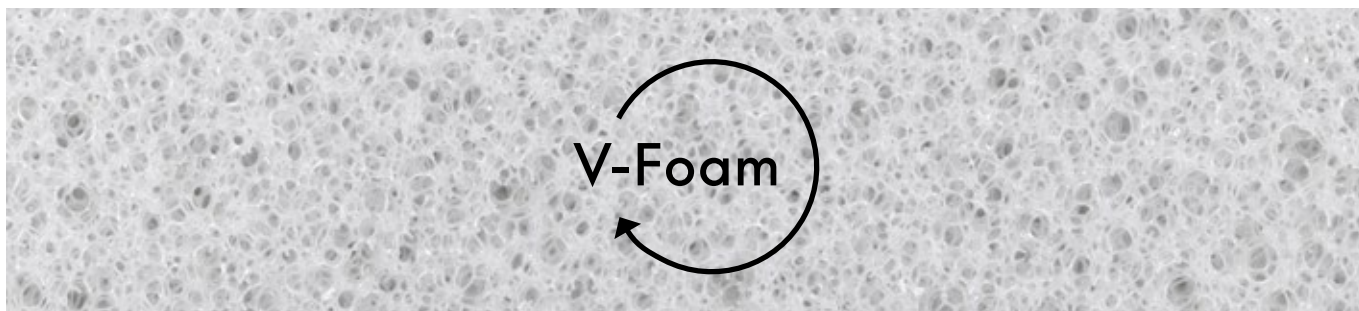
Unix Chair, Four-legged castor-based chair



Unix Chair, Four-star base



Unix Chair, Five-star base



Developed jointly by Vitra and BASF, V-Foam is the world's first economically recyclable polyurethane foam.

Standard polyurethane foam (PU foam) is derived from fossil fuels and utilised extensively worldwide. Its recycling process is very energy-intensive and uneconomical.

V-Foam, on the other hand, can be melted, reprocessed and returned to the material cycle in its entirety for use in new products. Vitra will gradually incorporate V-Foam for all its upholstered furniture containing moulded foam from 2025.

COLOURS AND MATERIALS



03
polished
aluminium

Base

.....



01
chrome

Cantilever tubular steel base

.....



53
soft grey

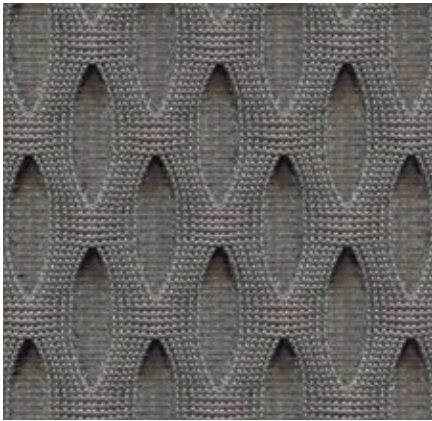


30
basic dark

Frame

.....

Diamond Mesh Heavy use



Diamond Mesh is a technical spacer fabric with a three-dimensional honeycomb structure. The hollow cells in the hexagonal structure facilitate air circulation and ensure comfortable thermal conditions. These characteristics, combined with the technical, yet vibrant look of this robust knit, make it an excellent choice for office settings.

Diamond Mesh is available in 7 colours.

Material	100% polyester
Weight	600 g/m ² (17.7 oz/y ²)
Width	165 cm (65")
Abrasion resistance	45,000 Martindale
Fastness to light	Type 6
Pilling	Grade 4-5
Fastness to rubbing	Grade 4-5 dry and wet



24
soft grey



21
dim grey



67
asphalt



66
nero



77
brick



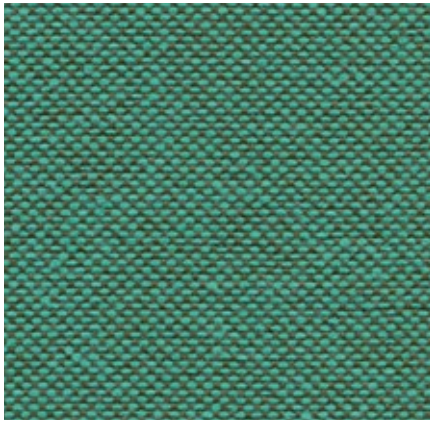
01
olive green



02
smoke blue

Plano Heavy use, F30

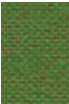

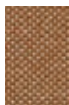
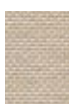
vitra.



Plano is a robust plain weave with a flat, even texture. The wide palette of duotones with new, delicate washed-out shades includes many relatively neutral hues, a good number of which are coordinated with the Hopsak colour range. Thanks to its durability and longevity, Plano is also an ideal choice for office furnishings.

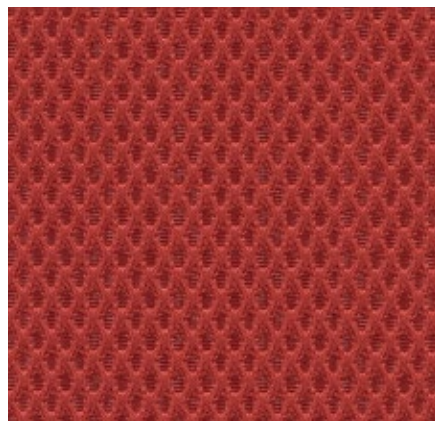
Plano is available in 39 colours.

Material	100% polyester
Weight	265 g/m ² (7.8 oz/y ²)
Width	142 cm +/- 2 cm (56")
Abrasion resistance	80,000 Martindale
Fastness to light	Type 6
Pilling	Grade 4-5
Fastness to rubbing	Grade 4-5 dry and wet

 05 cream white/ sierra grey	 34 grass green/ forest	 40 coconut/forest	 81 blue/coconut	 19 sierra grey	 73 nero/coconut
 18 light grey/sierra grey	 61 classic green/ cognac	 52 mint/forest	 13 nero/ice blue	 74 sierra grey/nero	 66 nero
 39 yellow/pastel green	 41 classic green/ forest	 43 petrol/nero	 86 dark blue/brown	 69 dark grey	 54 brown
 68 avocado	 17 forest/sierra grey	 12 light grey/ice blue	 87 nero/cream white	 62 dark grey/nero	 75 marron/nero
 11 marron/cognac	 72 poppy red	 84 poppy red/ champagne			
 67 cognac	 07 orange	 15 pink/sierra grey	 99 cognac/parch- ment		
 98 dark red/nero	 96 red/cognac	 16 dark red/ice blue	 20 tobacco/cream white		
 97 red/coconut	 63 red/poppy red	 80 coffee	 03 parchment/ cream white		

Silk Mesh Heavy use

vitra.



Silk Mesh is a three-dimensional spacer fabric. Thanks to the air cells in the regular honeycomb structure, the fabric not only provides a comfortable cushioning effect but also ensures a pleasant seating climate. Silk Mesh is extremely robust and well suited for use in office environments.

Silk Mesh is available in 7 colours.

Material	100% polyester
Weight	300 g/m ² (8.8 oz/y ²)
Width	170 cm +/- 3 cm (67")
Abrasion resistance	40,000 Martindale
Fastness to light	Type 6
Pilling	Grade 4-5
Fastness to rubbing	Grade 4-5 dry and wet



24
soft grey



21
dim grey



77
brick



67
asphalt



01
olive green



66
nero



02
smoke blue

Silk Mesh / rear side of back



24
soft grey /
soft grey



21
dim grey / like
frame colour



67
asphalt / nero



66
nero / nero



77
brick / like frame
colour

