

Eames Plastic Chair RE

Charles & Ray Eames, 1950



vitra.



Staged at the Eames House, Pacific Palisades, California
© Eames Foundation, 2023

Eames Plastic Chair RE

Now in recycled post-consumer plastic

The Eames Plastic Chairs RE are the latest version of the legendary Eames Plastic Chairs from 1950, which were developed for the Museum of Modern Art's 'Low-Cost Furniture Design' competition and were the very first industrially produced plastic chairs.

The organically shaped shell of the Eames Plastic Chairs RE can be paired with different bases for use in a broad range of settings, whether in dining rooms, restaurants, offices, home workspaces or waiting areas, on the balcony or in the garden. Combined with a choice of colours and a variety of upholstery versions, it is possible to create the ideal chair for individual needs.

The recycled material for the shells of the Eames Plastic Chairs RE stems from household waste, particularly used packaging, obtained through the 'Yellow Bag' (Gelber Sack) waste collection programme in Germany. Utilising this recyclate instead of the primary plastics previously used generates fewer climate-damaging emissions and consumes significantly less energy. Due to the composition of the recycled material, the various colour versions of the seat shells are interspersed with tiny specks of pigment.

At the end of the product's life, the shells can be 100% recycled fulfilling the strict ecological requirements that Vitra places on new materials and solutions in the development and manufacture of its products.

Eames Plastic Chair RE

- 1-5 Eames Plastic Chair RE
- 6-7 Charles & Ray Eames
- 8-9 Overview of models
- 10-11 Soft Seats
- 12- 17 Seat shells and upholstery easily coordinated
- 18-49 Areas of application
- 50-51 Sustainable materials
- 52-53 Ecology information, Spare parts, maintenance
- 54-55 Vitra's commitment
- 56-57 Vitra product warranty, Vitra Circle Stores
- 58-59 Authenticity
- 60-64 Surfaces and colours
- 65-66 Dimensions

Charles & Ray Eames

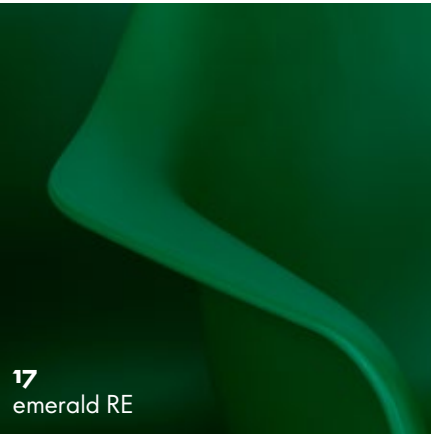


Charles and Ray Eames are counted among the most important figures of twentieth-century design. Their work spans the fields of furniture design, filmmaking, photography and exhibition

design. Vitra is the sole authorised manufacturer of Eames products for Europe and the Middle East. When you own an Eames product made by Vitra, you know it is an original.



Due to the composition of the recycled material, the various colour versions of the seat shells are interspersed with tiny specks of pigment.



Eames Plastic Chair RE

Overview of models

Wood Base

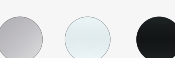


Eames Plastic Side Chair RE
DSW



Eames Plastic Armchair RE
DAW

Rod Base



Eames Plastic Armchair RE
DAR



Eames Plastic Side Chair RE
DSR



Eames Plastic Side Chair
LSR



Eames Plastic Armchair RE
LAR



Eames Plastic Armchair RE
RAR

Tube Base



Eames Plastic Side Chair RE
DSX



Eames Plastic Armchair RE
DAX



Eames Plastic Chair RE
Stool Medium

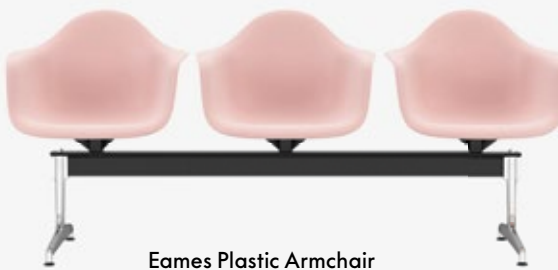


Eames Plastic Chair RE
Stool High

Beam Seating



Eames Plastic Side Chair RE
beam seating



Eames Plastic Armchair
RE

La Fonda Base



Eames Plastic Side Chair RE
DSL



Eames Plastic Armchair RE
DAL

Stackable Base



Eames Plastic Side Chair RE
DSS



Eames Plastic Side Chair RE
DSS-N

Studio Base



Eames Plastic Side Chair RE
PSCC



Eames Plastic Armchair RE
PACC

Soft Seats, seat cushions, full upholstery

vitra.



Chairs without upholstery can be fitted with the loose seat cushions Soft Seats: type A for the armchair model and type B for the side chair.



Side chairs and armchairs are available with a fixed seat cushion in Hopsak or Checker.



Side chairs and armchairs can also be ordered with full upholstery in Hopsak or Checker. The edging (piping) comes in either black or white.

Soft Seats

vitra.



Soft Seats

Available in three shapes, the Soft Seats by Vitra are made of a recyclable thermopressed fleece and provide soft comfort on unupholstered chairs –including outdoors with the Soft Seats Outdoor version.

Indoor:

Available in 11 cover fabrics, 2 leather options and numerous colours.

Outdoor:

Available in Simmons cover fabric with a choice of 3 colours.

Please use Soft Seat type A for the armchair model and type B for the side chair.

Soft Seat Outdoor

- **Upholstery:** padding made of water-permeable polyurethane foam for outdoor use, 2-cm thick.
- **Cover:** quick-drying, antibacterial outdoor fabric, resistant to light, water and mould, with zip fastener (always in black), removable. Cover can be washed at 30 degrees.



Outdoor use: suitable for utilisation outdoors on a temporary or seasonal basis, following care instructions. After prolonged exposure to the elements, clean and store away in a cool, dry place to ensure lasting use and avoid any deterioration in appearance.

- **Note:** always with non-slip fabric on reverse side.



Seat shells and upholstery easily coordinated

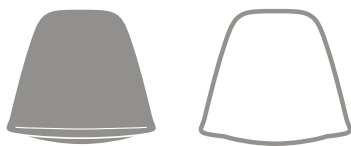
vitra.

vitra.

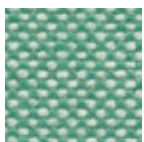
With a total of 14 shell colours, 35 upholstery shades and many different bases, the collection of Plastic Side Chairs RE and Plastic Armchairs RE offers around 100,000 possible combinations. This vast array of options makes it possible to colour-coordinate chairs to suit the specific interior.

Each shell colour can be paired with the Hopsak palette to define individual combinations.

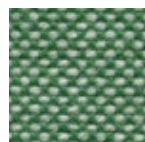
1. Duotones containing a light thread can be attractively paired with light-coloured shells and white welting.



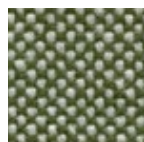
81
ice blue/ivory



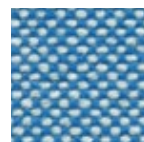
85
mint/ivory



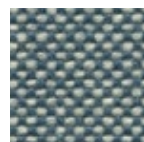
20
green/ivory



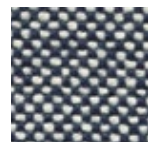
87
ivory/forest



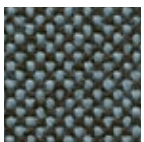
83
blue/ivory



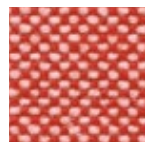
25
sea blue/ivory



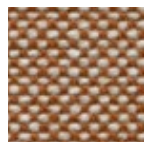
74
dark blue/ivory



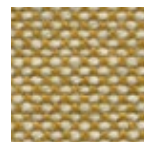
82
ice blue/moor brown



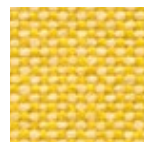
67
poppy red/ivory



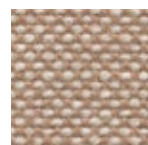
88
cognac/ivory



18
mustard/ivory



16
yellow/ivory



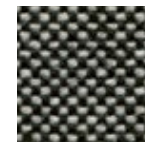
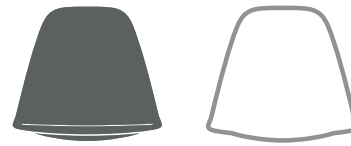
17
nude/ivory



79
warm grey/ivory



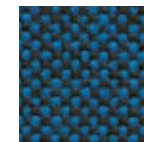
2. Duotones with a dark thread are very striking in combination with a dark shell and black welting.



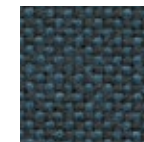
23
nero/ivory



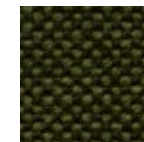
82
ice blue/moor brown



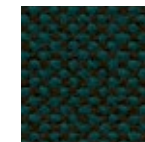
84
blue/moor brown



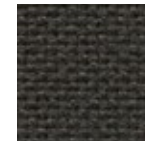
22
sea blue/dark grey



77
nero/forest



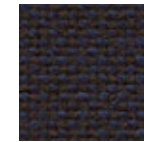
73
petrol/moor brown



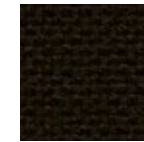
05
dark grey



24
dark grey/nero



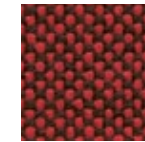
75
dark blue/moor brown



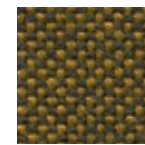
66
nero



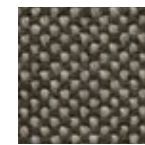
76
marron/moor brown



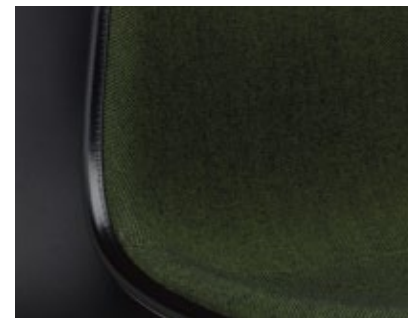
62
red/moor brown



19
mustard/dark grey







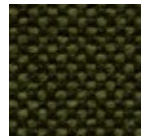
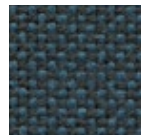
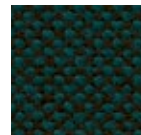


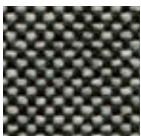
80
warm grey/moor brown

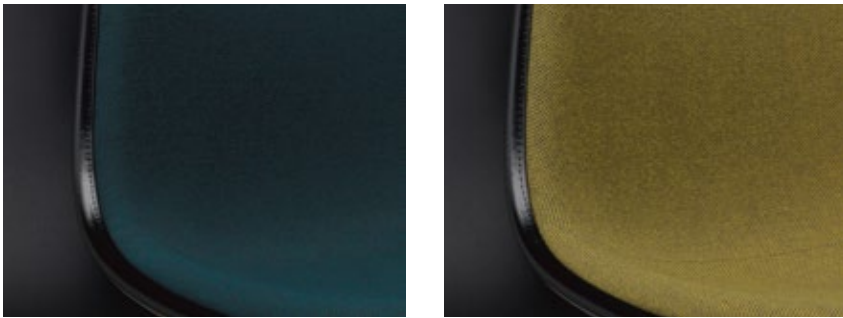


Each shell colour can be paired with the Hopsak palette to define individual combinations. The user can also pick up the colour of the shell in the fabric, or play with duotones and create accents.

						
11 pebble RE		79 warm grey/ivory	17 nude/ivory			
						
24 light grey RE		74 dark blue/ivory				
						
41 pale rose RE		68 pink/poppy red				
						
92 citron RE		16 yellow/ivory	71 yellow/pastel green			
						
03 poppy red RE		67 poppy red/ivory	65 coral/poppy red	63 red/poppy red		96 red/cognac
						
17 emerald RE		20 green/ivory				



						
23 ice grey RE		81 ice blue/ivory				
						
34 mustard RE		18 mustard/ivory		19 mustard/dark grey		
						
43 rusty orange RE		88 cognac/ivory				
						
48 forest RE		70 grass green/forest		87 ivory/forest	77 nero/forest	
						
83 sea blue RE		25 sea blue/ivory	82 ice blue/moor brown		22 sea blue/dark grey	73 petrol/moor brown
						
56 granite grey RE		80 warm grey/moor brown	23 nero/ivory	75 dark blue/moor brown	05 dark grey	24 dark grey/nero







Dining at home – or eating out

The Eames Plastic Chairs RE are robust and hard-wearing. They are not only suited for use at home as enduring classics in the dining room, but can also be utilised in restaurants, canteens, cafeterias and as high and medium stools at bar counters.

Materials DAW

- **Base:** wooden base in various shades of maple or honey-toned ash, stained and lacquered finish. Steel rod cross struts in basic dark. (DAW = Dining Height Armchair Wood Base)
- **Origin of wood:** ash (*Fraxinus excelsior*) and maple (*Acer platanoides*) from Western Europe and/or Poland.

Materials DSW

- **Base:** non-stackable wooden base in various shades of maple or honey-toned ash, stained and lacquered finish. Steel rod cross struts in basic dark. (DSW = Dining Height Side Chair Wood Base)
- **Origin of wood:** ash (*Fraxinus excelsior*) and maple (*Acer platanoides*) from Western Europe and/or Poland.



DAW

DAL

DSW

DSL



Materials DAR

- **Base:** wire base with cross struts, chrome-plated or powder-coated finish. (DAR = Dining Height Armchair Rod Base)

Materials DSR

- **Base:** non-stacking four-legged wire base with cross struts. (DSR = Dining Height Side Chair Rod Base)

Materials DSX

- **Base:** non-stacking four-legged tubular steel base. (DSX = Dining Height Side Chair X-Base)

Materials DAX

- **Base:** four-legged tubular steel base, chrome-plated or powder-coated. (DAX = Dining Height Armchair X-Base)

Materials DAL

- **Base:** La Fonda base in die-cast aluminium, polished or powder-coated finish. (DAL = Dining Height Armchair La Fonda Base)

Materials DSL

- **Base:** La Fonda base in die-cast aluminium, polished or powder-coated finish. (DSL = Dining Height Side Chair La Fonda Base)



DAR

DSR

DSX

DAL









Outdoor

Versions of the Eames Plastic Chair RE with non-upholstered seat shells and powder-coated bases are also suited for use in outdoor settings. They not only provide a striking visual accent on terraces and balconies but also ensure exceptional comfort under the open sky.

Materials DAR

- **Base:** wire base with cross struts, chrome-plated or powder-coated finish. (DAR = Dining Height Armchair Rod Base)

Materials DSR

- **Base:** non-stacking four-legged wire base with cross struts. (DSR = Dining Height Side Chair Rod Base)

Materials DAX

- **Base:** four-legged tubular steel base, chrome-plated or powder-coated. (DAX = Dining Height Armchair X-Base)

Materials DAL

- **Base:** La Fonda base in die-cast aluminium, polished or powder-coated finish. (DAL = Dining Height Armchair La Fonda Base)

Materials DSL

- **Base:** La Fonda base in die-cast aluminium, polished or powder-coated finish. (DSL = Dining Height Side Chair La Fonda Base)

Materials DSX

- **Base:** non-stacking four-legged tubular steel base. (DSX = Dining Height Side Chair X-Base)



Outdoor use

DAR, DSR, DAX, DSX, DSL, DAL

unupholstered version with powder-coated base suitable for utilisation outdoors on a temporary or seasonal basis, following care instructions. After prolonged exposure to the elements, clean and store away in a dry, sheltered place to ensure lasting use and avoid any deterioration in appearance.



Living

The iconic Eames Plastic Chair RE RAR (Rocking Armchair Rod Base) and LAR (Lounge Height Armchair Rod Base) are compact but expressive lounge chairs.

Seat shell: dyed-through, recycled polypropylene, 100% recyclable. All models are available with a seat cushion (screwed to the seat shell) or full upholstery, both made of recyclable polyurethane foam 'V-Foam'. The fully upholstered version has moulded polyurethane foam padding covered in fabric, attached to the shell with a welted edge. Different shell and upholstery colours and various bases provide a multitude of possible combinations.

- Due to British fire safety regulations, V-Foam is not used in the UK. Fire retardants would have to be added to the formula, which would make it impossible to recycle V-Foam separately.

Materials RAR

- **Base:** wire base with cross struts, chrome-plated or powder-coated finish, on solid maple runners. (RAR = Rocking Armchair Rod Base)
- **Origin of wood:** maple (*Acer platanoides*) from Western Europe and/or Poland.

Materials LAR

- **Base:** wire base with cross struts, chrome-plated or powder-coated finish. Seat height 256 mm. (LAR = Lounge Height Armchair Rod Base)

Materials LSR

- **Base:** wire base with cross struts, chrome-plated or powder-coated finish. Seat height 260 mm. (LSR = Lounge Height Side Chair Rod Base)



Outdoor use

LAR, LSR
unupholstered version with powder-coated base suitable for utilisation outdoors on a temporary or seasonal basis, following care instructions. After prolonged exposure to the elements, clean and store away in a dry, sheltered place to ensure lasting use and avoid any deterioration in appearance.











Home office and studio

The PACC and PSCC versions feature a height-adjustable five-star base on castors with both spring and swivel functions. The chairs offer pleasant comfort in office environments where work tasks require shorter periods of sitting.

Materials PACC

- **Base:** five-star base in polished die-cast aluminium with double castors in basic dark. (PACC = Pivot Armchair Cast Base on Castors)

Materials PSCC

- **Base:** five-star base in polished die-cast aluminium with double castors in basic dark. (PSCC = Pivot Side Chair Cast Base on Castors)



PACC

PSCC



The Eames Plastic Stools RE come in a choice of two different heights: medium for kitchen counters and high for standing-height tables. Either chrome-plated or powder-coated in black, the base for both height versions is adapted from the classic four-legged base of the DSX chair. Its geometry is modified to accommodate the altered distribution of forces in the higher seating positions while a footrest ensures comfort and safety. When ordered with a powder-coated base, the Plastic Stools RE can also be used outdoors.

Materials Stool High

- **Base:** tubular steel, chrome-plated or powder-coated, non-stackable. Height of seat front edge: 820 mm; ideal for use at counters and tables 110 to 115 cm in height (without seat cushion). The powder-coated version may show signs of abrasion on the footrest due to the anti-slip coating.

Materials Stool Medium

- **Base:** tubular steel, chrome-plated or powder-coated, non-stackable. Height of seat front edge: 700 mm; ideal for use at counters and tables 95 to 100 cm in height (without seat cushion). The powder-coated version may show signs of abrasion on the footrest due to the anti-slip coating.



Outdoor use: unupholstered version with powder-coated base suitable for utilisation outdoors on a temporary or seasonal basis, following care instructions. After prolonged exposure to the elements, clean and store away in a dry, sheltered place to ensure lasting use and avoid any deterioration in appearance.



Stool High

Stool Medium









Multipurpose seating

As flexible seating solutions in auditoriums, conference facilities, media rooms, assembly halls and similar spaces, the Eames Plastic Chairs RE have proven their worth over decades of use: the models DSS and DSS-N can be stacked, and DSS can also be linked in rows.

Materials DSS

- **Base:** chrome-plated tubular steel base, DSS with ganging bracket. (DSS = Dining Height Side Chair Stacking Base)
- **Stacking:** version without upholstery can be stacked up to 8 chairs high on the floor or on a stacking trolley. Variants with seat cushion or full upholstery can be stacked up to 5 chairs high on the floor or 6 chairs high on a stacking trolley.

Materials DSS-N

- **Base:** chrome-plated tubular steel base, DSS-N without ganging brackets. (DSS-N = Dining Height Side Chair Stacking Base Non-Link)
- **Stacking:** version without upholstery can be stacked up to 8 chairs high on the floor or on a stacking trolley. Variants with seat cushion or full upholstery can be stacked up to 5 chairs high on the floor or 6 chairs high on a stacking trolley.



DSS-N

DSS, row with ganging brackets

Stacking

Stacking trolley

The practical stacking trolley facilitates the quick set-up and storage of chairs used for temporary functions.



Ganging brackets

With the ganging brackets, the chairs can be easily hooked together to keep them in their intended place.



Row and seat numbers

The models DSS and DSS-N can be labelled with a row number as well as a seat number.





Eames Plastic Chair RE beam seating

vitra.



Waiting areas

Beam supports in different lengths are available for the Eames Plastic Chairs RE, accommodating two to five seat shells. Thanks to the robust seat shells and the indestructible base construction, these configurations are suited for all types of waiting areas including those subject to intense use.

Materials Eames Plastic Chair RE on beam

- **Table unit:** black solid core material (560 x 430 mm).
- **Base:** two-legged base beams in different lengths accommodate 2 to 5 chair shells or table units. T-beam, epoxy-coated in basic dark, polished aluminium legs. Fitted with plastic glides for carpet or non-slip felt glides for hard floors.



Eames Plastic Side Chair on beam



Eames Plastic Armchair on beam

Upholstery materials

vitra.



Hopsak

Hopsak is an expressive, flat plain-weave fabric made of polyamide. The duotone colours offer a multitude of design possibilities in high-contrast, brightly hued or subtle combinations of warp and weft threads. Highly durable and robust, Hopsak can be used in private interiors as well as public areas.

Hopsak is available in 35 colours.



Care Instructions

Cover fabrics

To care for cover fabrics, vacuum regularly with an upholstery nozzle to remove dust and lint. Fresh spots and spills can usually be removed by blotting immediately with an absorbent, lint-free sponge or cloth. To prevent remaining traces of a ring mark, work from the edge of the spot towards the centre. To avoid mineral residue from remaining on dark fabrics after drying, we recommend the use of household-grade distilled water for dampening. Stubborn stains can be treated by brushing dry stains lightly with a soft brush (for example, a clothes brush). Depending on the type of stain, the use of solvents may be necessary. In such cases, it is essential to consult a professional cleaner. Under no circumstances should cover fabrics be rubbed vigorously. Please be sure to consult a specialist before using any solvent-based cleaning product.

Plastics

Vitra plastics are very robust, with excellent shape retention and colourfastness, making them resistant to a variety of chemicals and other substances. Furthermore, special additives retard the fading of colours due to UV radiation. However, the exposure of a chair to sunlight for prolonged periods may cause the colour to change over time. For this reason, limited exposure to sunlight is advisable. Please use a soft, damp, non-abrasive cloth to clean plastic surfaces and dry gently. For stain removal, we recommend the use of a mild, commercially available cleaning agent. Always avoid abrasive cleaning agents including powders and pastes as well as aggressive 'all-purpose' cleaners containing alcohol, which will damage the surface.



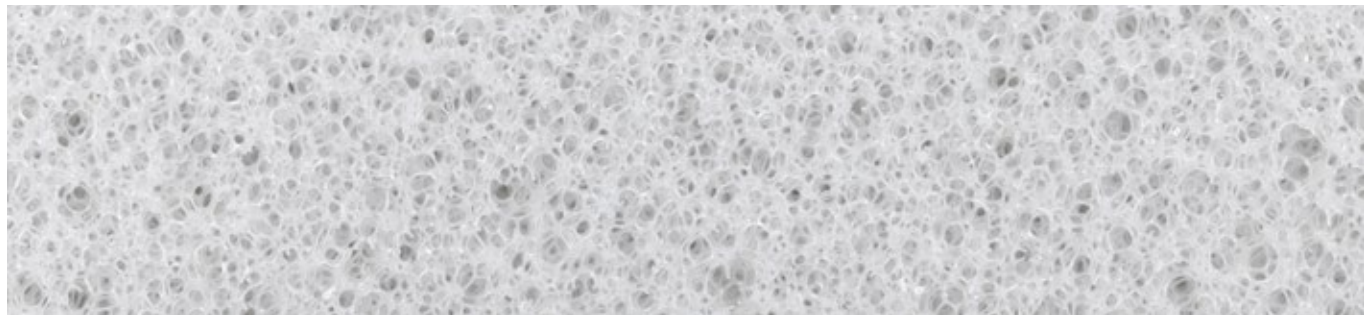
Post-Consumer-Recycling-Kunststoffe



Material, häufig Einweg-Abfälle, das zuvor von Verbraucherinnen genutzt wurde, bevor es zu einem neuen Produkt weiterverarbeitet wird. Die von Vitra verwendeten Post-Consumer-Kunststoffe verlassen die Fabrik als fertige Verpackung, werden vom Verbraucher gekauft und anschliessend über das deutsche System «Gelber Sack» entsorgt.

Vitra verwendet Post-Consumer-Recyclingmaterialien, hauptsächlich Verpackungsmaterial, das aus Haushaltsabfällen stammt. Dies ist nur möglich, wenn es ein geeignetes Trennsystem für Haushaltsabfälle gibt, wie es in Deutschland oder Österreich der Fall ist. Die bei Vitra verwendeten Post-Consumer-Recyclingmaterialien stammen aus dem Sammelsystem «Gelber Sack» in Deutschland. Falls es möglich ist, ein Produkt oder ein Bauteil aus einem Post-Consumer-Recyclingmaterial herzustellen, wird diese Lösung bei Vitra bevorzugt. Vitra verwendet Post-Consumer-Materialien in immer mehr Produkten wie Eames Plastic Chair RE, Tip Ton RE, der HAL RE Familie und vielen Accessoires.

V-Foam - meltable PU foam



Developed jointly by Vitra and BASF, V-Foam is the world's first economically recyclable polyurethane foam.

Standard polyurethane foam (PU foam) is derived from fossil fuels and utilised extensively worldwide. Its recycling process is very energy-intensive and uneconomical.

V-Foam, on the other hand, can be melted, reprocessed and returned to the material cycle in its entirety for use in new products. Vitra will gradually incorporate V-Foam for all its upholstered furniture containing moulded foam from 2025.

Due to British fire safety regulations, V-Foam is not used in the UK. Fire retardants would have to be added to the formula, which would make it impossible to recycle V-Foam separately.



Recycled aluminium



Alongside steel, aluminium is the metal most frequently used in Vitra's product portfolio. The production of recycled aluminium consumes only around 5% of the energy required for the extraction and processing of primary aluminium. All Vitra products that contain aluminium therefore include a substantial proportion of recycled material, which is being continually increased wherever technically feasible. The La Fonda base, for instance, contains 95% recycled aluminium. More than 90% of Vitra's aluminium components are sourced from suppliers in Europe.



Environmental Product Passport

The Environmental Product Passport contains information about the product carbon footprint, recycling, material composition, packaging & logistics, the supply chain and available product certificates. If you have any questions about the Environmental Product Passport or other queries about sustainability, please feel free to contact us at sustainability@vitra.com

Spare parts

Castors and glides can be ordered directly from the vitra.com website. [Link to online shop](#)
For other spare parts, please contact Vitra or your local Vitra partner.



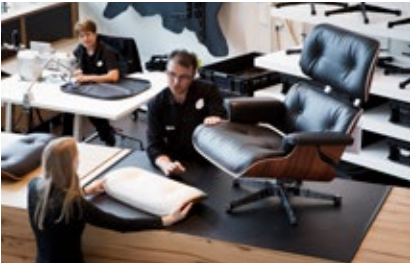
Care instructions

Here you will find care instructions for cover fabrics, leather, plastics and metals. [Link to website](#)



Warranty & maintenance

General two-year warranty on Eames Plastic Chair. For matters relating to maintenance and repair or general enquiries, contact our Service Team using the following form. [Link to Service Team contact form](#)



Find Vitra

Here you can find the nearest Vitra location or a Vitra partner for local assistance. [Find Vitra](#)





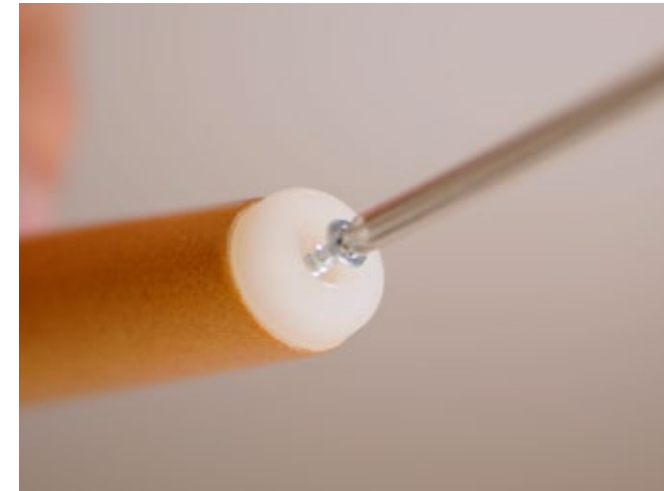
‘Vitra’s greatest contribution to sustainability is its products with an above-average service life, which omit everything superfluous. Our roots in modern design would allow nothing else.’

Nora Fehlbaum, CEO of Vitra

The close and long-standing collaboration with Charles and Ray Eames has shaped Vitra in significant ways. Carrying on the tradition of thinking espoused by the designer couple, the company places emphasis on the durability and longevity of products as part of its contribution to sustainable development, and avoids stylistic trends. This is most clearly exemplified by the classic designs in Vitra’s portfolio, whose lasting functionality and timeless aesthetic keep them up to date and in active use for decades. They retain their value on the secondary market, changing owners and perhaps even ending up in a collection.

To ensure that Vitra products remain in circulation for as long as possible, they are designed in a manner that facilitates their reuse and recycling. Repairs, returns and extended guarantees support their longevity. And used Vitra products are refurbished and put back into circulation in Vitra Circle Stores.

Selected spare parts that can be easily replaced are available in our online shop. These include castors and glides for a broad number of our task chairs and chairs, and suited to different floor types. The spare parts finder at vitra.com/spareparts allows effortless identification of the correct parts for your product. The replacement process is explained step by step in a short video.



For all other replacement parts, please use [Find Vitra](#) to locate an authorized dealer near you or contact us directly using the contact form. Please be aware that for safety reasons we cannot offer all available spare parts for direct purchase and delivery to end customers, as some require replacement by trained professionals.



Take-Back-Programme

Vitra launched a Take-Back-Programme in 2019 for its family of Eames Shell Chairs: Eames Fiberglass Chairs, Eames Plastic Chairs and Eames Wire Chairs that are no longer in use can be returned to Vitra – worldwide, regardless of when they were produced. The service is intended for customers who cannot or do not wish to resell or dispose of their product themselves. The returned chairs may consist of still usable or repairable products that can be resold, or heavily damaged products that require correct recycling. If you have any products you wish to return via the Vitra Take-Back-Programme, please write to: circular@vitra.com



Vitra products are designed and constructed to last as long as possible and this quality promise guides every decision in Vitra's product development and manufacturing processes.

Vitra guarantees the longevity of selected products with a limited manufacturer warranty of ten- to thirty-years as per warranty terms listed below. The Vitra Product Warranty is part of the company's commitment to sustainability.

The date of purchase may not be earlier than 1 January 2024
Product was purchased from Vitra or its authorised dealers/retailers by a private customer*
Product is listed in section 1.b of the full warranty terms and conditions
Registration within six months of purchase at my.vitra.com

*With the exception of Eames Aluminium Group & Soft Pad Group products, which can be registered by private and business end-customers.



With the Circle Stores, Vitra puts sustainable management principles into practice by giving its products a second life. Since mid-October 2023, a new Circle Store has been located on the Vitra Campus in Weil am Rhein, joining existing sites in Brussels and Amsterdam. Find all Vitra Circle Stores: www.vitracircle.com.



When the pertinent legal and conceptual conditions are met, one can speak of a design original.

This term means that a design – independent of its production date – was fabricated by the authorised manufacturer in the true spirit of the designer. These factors guarantee its authenticity.

The status of an original is determined by the relationship between the designer (or rightful heirs) and the manufacturer of the designer's products. There is not only a legal component to this relationship, but also an immaterial one based on shared ideals and collaboration.

For any product to be designated as an 'original', the designer must have given the manufacturer the authorisation to produce it. Anyone who produces a design without legal permission is appropriating property that belongs to someone else. This applies not only to the manufacturer, but also to the consumer who buys an unlicensed product.

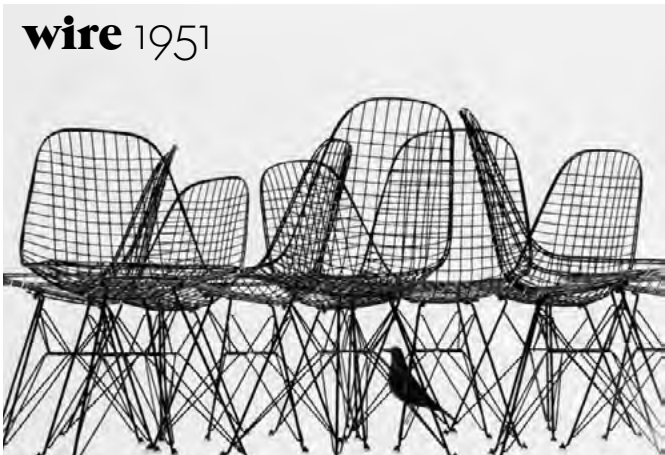
Equally important is the creative connection between the designer and manufacturer. It is evident in their close cooperation at every step of the production process. Because the plagiarist does not have this relationship, there is always uncertainty about the degree to which the copy deviates from the original idea, whether for reasons of ignorance, carelessness or cost reduction.

Rolf Fehlbaum,
Chairman Emeritus, Vitra

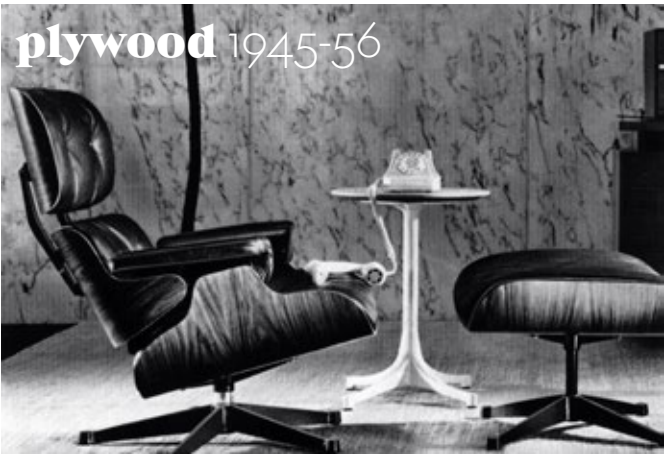


plastic 1948-61

wire 1951



plywood 1945-56



Authenticity

«In close cooperation with the Eames Office, which represents Charles & Ray Eames' family, Vitra guarantees that each Eames Plastic Chair gives the exact design experience of comfort, aesthetics and quality that Charles & Ray Eames intended for the user – a feeling that only the original can offer.»


Eames Demetrios



aluminium 1958-69



Recycled plastic

Depending on the material properties required of a product, Vitra chooses different types of plastic for the manufacture of its furniture. This always raises the issue of whether new, more ecological alternatives are available, which has led to the development of various recycled plastics. Depending on the type of product and its requirements, Vitra utilises high-quality recycling materials that stem from recyclable household waste, especially used packaging, or industrial waste.

Seat shell RE

85 cotton white RE	17 emerald RE	92 citron RE
23 ice grey RE	48 forest RE	34 mustard RE
24 light grey RE	83 sea blue RE	43 rusty orange RE
56 granite grey RE		03 poppy red RE
12 deep black RE		41 pale rose RE
		11 pebble RE



Seat shell and base, predefined colour combinations DSR



Metal

Vitra most frequently uses aluminium and steel for metal components. Since 94% less energy is required to produce recycled aluminium in comparison to primary aluminium, Vitra utilises aluminium consisting of 95% recycled material whenever possible. Depending on the product, metal surfaces are either powder-coated, chrome-plated, polished, galvanised, lacquered or blasted. A smooth or textured powder-coated finish provides colour and surface protection.

34/92 mustard/citron	11/30 pebble/Eames Sea Foam Green
83/93 sea blue/ sky blue	48/24 forest/dark green



DSL, DAL



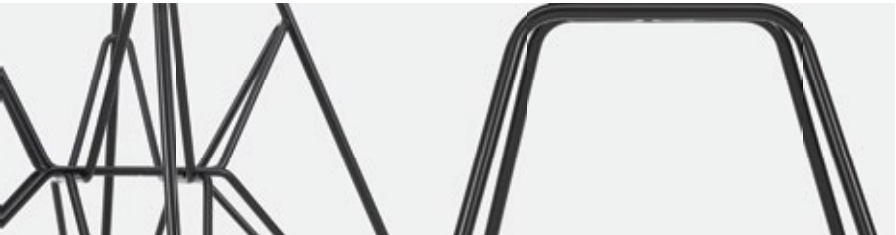
03
polished aluminium



30
basic dark powder-coated (smooth)

Metal

Vitra most frequently uses aluminium and steel for metal components. Since 94% less energy is required to produce recycled aluminium in comparison to primary aluminium, Vitra utilises aluminium consisting of 95% recycled material whenever possible. Depending on the product, metal surfaces are either powder-coated, chrome-plated, polished, galvanised, lacquered or blasted. A smooth or textured powder-coated finish provides colour and surface protection.



DSR, DAR, DSX, DAX, LAR, LSR, RAR



04
white powder-coated (smooth)



01
chrome



30
basic dark powder-coated (smooth)



PACC, PSCC



03
polished aluminium



DSS, DSS-N



01
chrome



DSW, DAW, Rocking skids RAR



65
ash, honey tone, lacquer finish



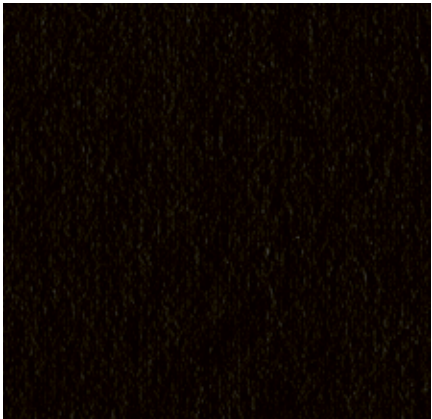
02
maple, golden, lacquer finish

Solid Wood

Wood is characterised by variations in grain, texture and colour, making each wooden furnishing a unique object. Vitra has strict quality standards for the woods selected for its products and uses wood from several trees for the manufacture of a single furniture object made of solid wood. As a result, every piece has a lively and distinctive appearance. The solid woods used by Vitra are mainly sourced in Europe and have an oiled or lacquered finish, depending on their application. Exposure to light will alter the colour of wood over time.



95
maple, dark, lacquer finish







30
maple, black, lacquer finish

Hopsak Medium use, F6o



Hopsak

 16 yellow/ivory	 20 green/ivory	 81 ice blue/ivory	 23 nero/ivory	 79 warm grey/ivory	 67 poppy red/ivory
 71 yellow/pastel green	 86 mint/forest green	 83 blue/ivory	 05 dark grey	 17 nude/ivory	 68 pink/poppy red
 69 grass green/ivory	 85 mint/ivory	 89 sea blue/ivory brown	 24 dark grey/nero	 88 cognac/ivory	 65 coral/poppy red
 70 grass green/forest	 87 ivory/forest	 74 dark blue/ivory	 66 nero	 18 mustard/ivory	 63 red/poppy red
	 77 nero/forest	 84 blue/moor brown		 19 mustard/dark grey	 96 red/cognac
	 73 petrol/moor brown	 22 sea blue/dark grey		 80 warm grey/moor brown	 62 red/moor brown
		 75 dark blue/moor brown			 76 marron/moor brown

Edge

 04 white	 01 basic dark
---	--

Hopsak is an expressive, flat plain-weave fabric made of polyamide. The duotone colours offer a multitude of design possibilities in high-contrast, brightly hued or subtle combinations of warp and weft threads. Highly durable and robust, Hopsak can be used in private interiors as well as public areas.

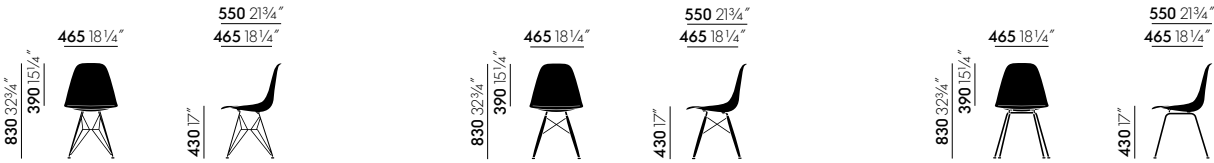
Hopsak is available in 35 colours.

Material	100% polyamide
Weight	550 g/m ² (16.2 oz/y ²)
Width	127 cm +/- 2 cm (50")
Abrasion resistance	200,000 Martindale
Fastness to light	Type 6
Pilling	Grade 4-5
Fastness to rubbing	Grade 4-5 dry and wet

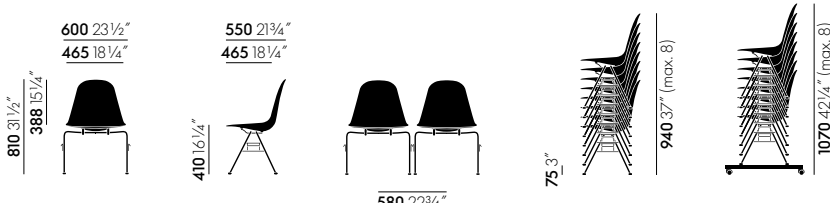
vitra.

Dimensions

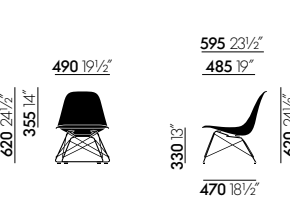
(in accordance with EN 1335-1:2000)



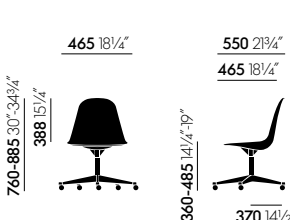
Eames Plastic Side Chair RE DSR Eames Plastic Side Chair RE DSW Eames Plastic Side Chair RE DSX



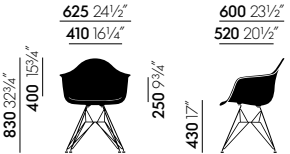
Eames Plastic Side Chair RE DSS



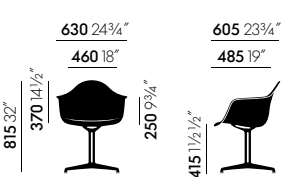
Eames Plastic Side Chair RE LSR



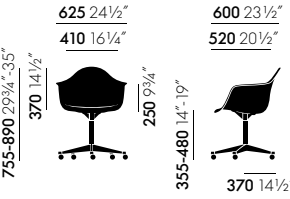
Eames Plastic Side Chair RE PSCC



Eames Plastic Side Chair RE DSS-N



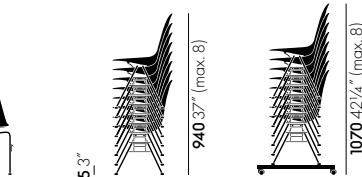
Eames Plastic Armchair RE DAR



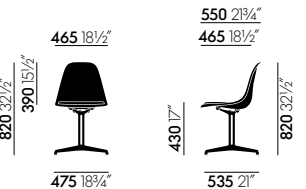
Eames Plastic Armchair RE DAL

Eames Plastic Armchair RE PACC

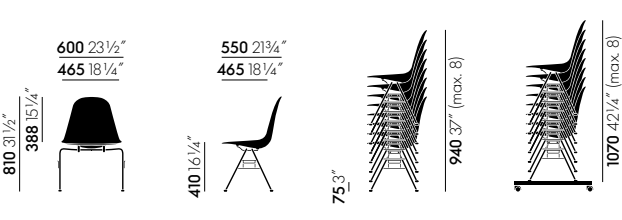
Eames Plastic Armchair RE PACC



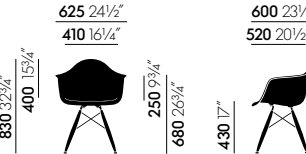
Eames Plastic Armchair RE DAW



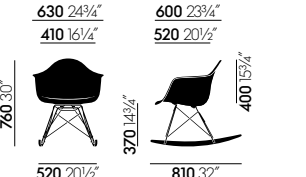
Eames Plastic Armchair RE RAR



Eames Plastic Armchair RE LAR



Eames Plastic Armchair RE DAX



Eames Plastic Armchair RE DAX



Eames Plastic Armchair RE DAX

Eames Plastic Armchair RE DAX

Eames Plastic Armchair RE DAX

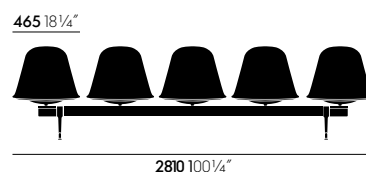
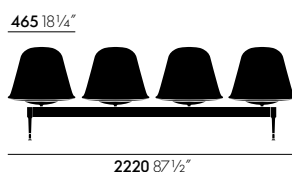
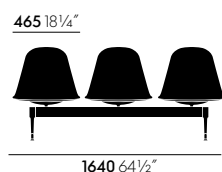
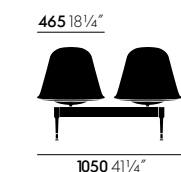
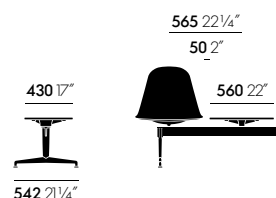
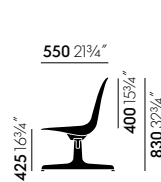
vitra.



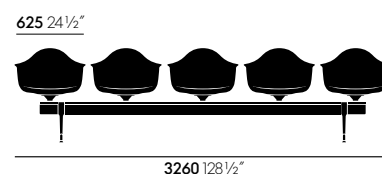
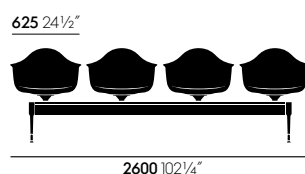
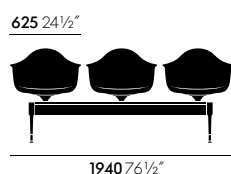
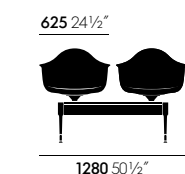
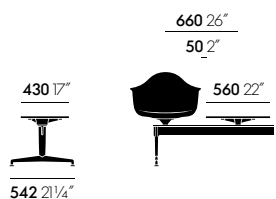
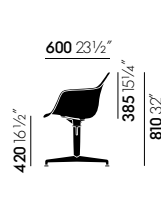
Eames Plastic Stool RE High



Eames Plastic Stool RE Medium



Eames Plastic Side Chair RE on stretcher



Eames Plastic Armchair RE on stretcher

